



**ALASKA DIVISION OF HOMELAND SECURITY &  
EMERGENCY MANAGEMENT**  
SITUATION REPORT 24-072 • March 12, 2024



Toll-Free 1.800.478.2337

Anchorage Area 907.428.7000

SEOC 907.428.7100

<p><b><u>SEOC Preparedness Level</u></b> Level 1 – Routine Operations.</p>	<p><a href="http://ready.alaska.gov">http://ready.alaska.gov</a></p>	<p><b><u>National Terrorism Advisory System:</u></b>  <a href="#">Read the NTAS Bulletin here</a></p>
<p><b><u>Maritime Security (MARSEC)</u></b> Level:1- Minimum Appropriate Security Measures</p>	<p><b>WHO Novel Coronavirus Pandemic (COVID-19):</b> <a href="#">2019 Novel Coronavirus</a></p>	<p><b><u>Alaska Military Installation Force Protection Level:</u></b> FPCON Bravo</p>

(Significant changes from previous situation reports are red.)

**Significant Issues:**

**State of Alaska Department of Health (DOH)**

The DOH stands ready to assist with all aspects of public health and, in the event of a public health emergency, is supported by the SEOC and other state departments as required. For current information, see: <https://health.alaska.gov/dph/Pages/default.aspx>  
<https://health.alaska.gov/dph/Emergency/Pages/prepared/default.aspx>

**NTAS Bulletin**

The U.S. Department of Homeland Security issued an updated National Terrorism Advisory Bulletin on May 24, 2023. The current and expired bulletins can be viewed at the below link.  
<https://www.dhs.gov/national-terrorism-advisory-system>

**Travel Alerts and Conditions**

For current driving conditions, dial 511 or visit: <https://511.alaska.gov/>

**Barry Arm Landslide / Tsunami Risk**

For the latest information on the Barry Arm Landslide and Tsunami risk, click here:  
<https://dggs.alaska.gov/hazards/barry-arm-landslide.html>

**Earthquakes**

United States Geological Service (USGS) Earthquake Information: <http://earthquake.usgs.gov/>  
National Tsunami Warning Center: <http://tsunami.gov/>

**Alaska Volcanoes**

**Great Sitkin Alert Level: Watch** and Aviation Color Code: **Orange**  
**Shishaldin Alert Level: Advisory** and Aviation Color Code: **Yellow**

For Alaska Volcano updates, go to: <https://www.avo.alaska.edu/>

### **Air Quality Index (AQI) Advisories**

For the most up-to-date Air Quality Index Advisories:  
<http://dec.alaska.gov/Applications/Air/airtoolsweb/Home/Index>

### **Spills of Oil and Hazardous Substances**

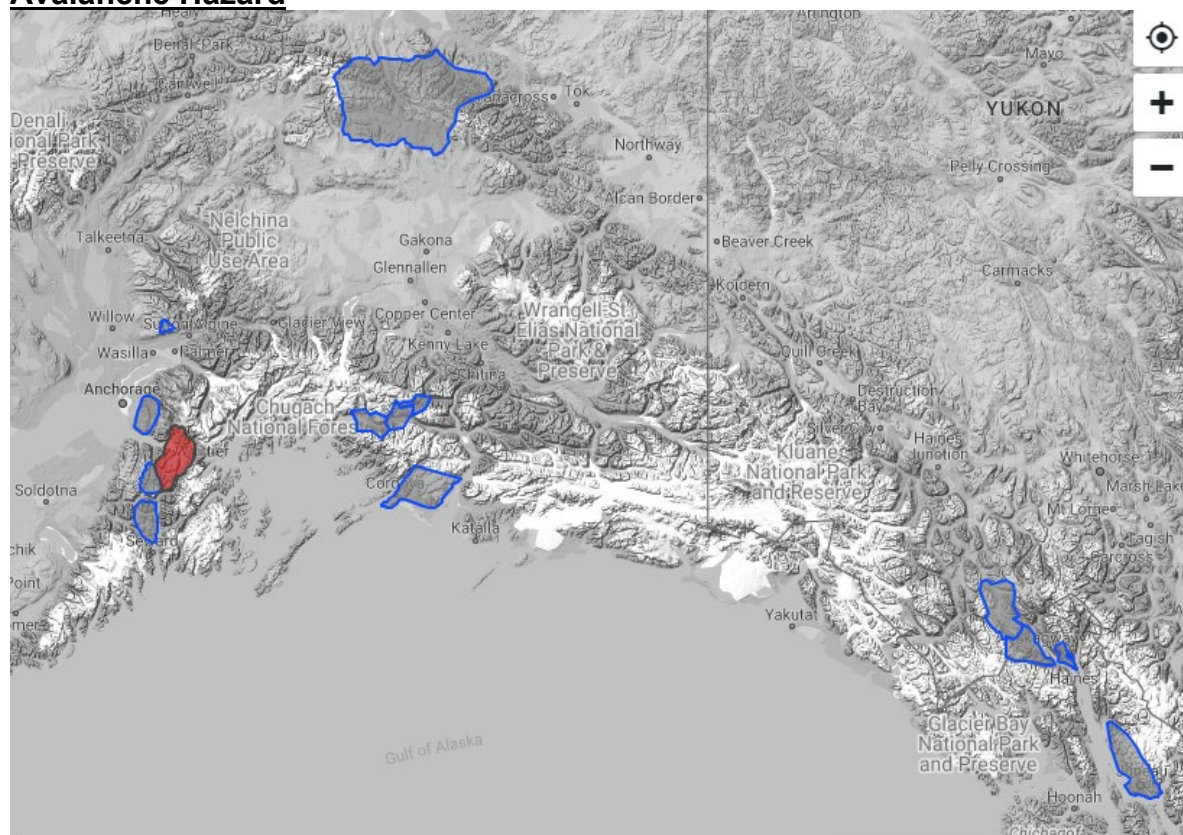
The Alaska Division of Environmental Conservation (ADEC) Spill Prevention and Response page is located at:  
<https://dec.alaska.gov/spar/>

### **Alaska Cyber Security Information**

State Employees may sign up for cybersecurity notifications and alerts at  
<https://oit.alaska.gov/security>

Cybersecurity and Infrastructure Security Agency (CISA)-Cybersecurity Services and Tools:  
[www.cisa.gov/free-cybersecurity-services-and-tools](http://www.cisa.gov/free-cybersecurity-services-and-tools)

### **Avalanche Hazard**

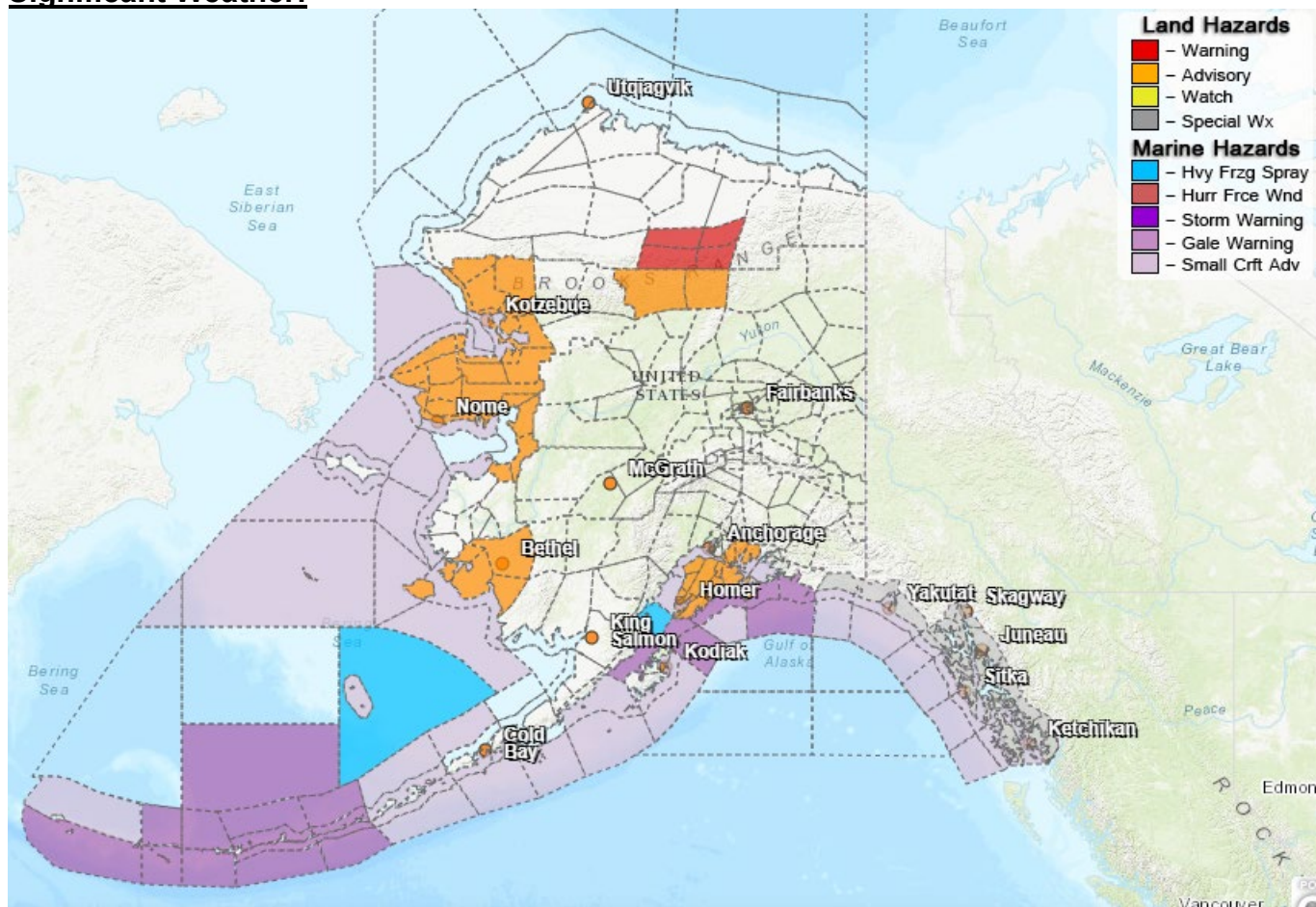


**Travel in avalanche terrain is not recommended. Avoid being on or beneath all steep slopes.**

**Turnagain Pass-HIGH at all elevations today. Travel in avalanche terrain is not recommended.**

For information and the most current avalanche conditions, go to <https://alaskasnow.org>

## Significant Weather:



### **Special Weather Statement**

- **City and Borough of Yakutat; Municipality of Skagway; Haines Borough and Klukwan; Glacier Bay; Eastern Chichagof Island; Cape Fairweather to Lisianski Strait; City and Borough of Sitka; Admiralty Island; City and Borough of Juneau; Petersburg Borough; Western Kupreanof and Kuiu Island; Prince of Wales Island; City and Borough of Wrangell; Ketchikan Gateway Borough; Annette Island** –warming temps with heavy rain beginning middle of week.

### **Wind Chill Advisory**

- **Central Brooks Range and South Slopes of The Central Brooks Range** – in effect until 1PM Thursday
- **Noatak Valley; Kivalina and Red Dog Dock; Lower Kobuk Valley; Baldwin Peninsula; Northern Seward Peninsula; Shishmaref; Bering Strait Coast; Southern Seward Peninsula Coast; Interior Seward Peninsula; Eastern Norton Sound and Nulato Hills** – In effect until 1PM Thursday
- **Kuskokwim Delta**-in effect till noon today.

### **Wind Chill Warning**

- **Central Brooks Range**- in effect until 1pm Thursday.

### **Winter Weather Advisory**

- **Western Kenai Peninsula**-in effect until 6PM this evening
- **East Turnagain Arm, Western Prince William Sound**-in effect until 4PM this afternoon.

For more information and the most current weather, Watches / Warnings / Advisories go to:

<https://www.weather.gov/arh/>

**The Next Situation Report** will be **March 13, 2024**. A significant change in the situation or the threat level will prompt an interim report. This report is posted on the internet at <https://ready.alaska.gov/sitrep>.

To register for email distribution, go to <http://list.state.ak.us/mailman/listinfo/dhsem.situation.report>. Direct questions regarding this report to the SEOC at 907-428-7100 or [seoc@alaska.gov](mailto:seoc@alaska.gov).